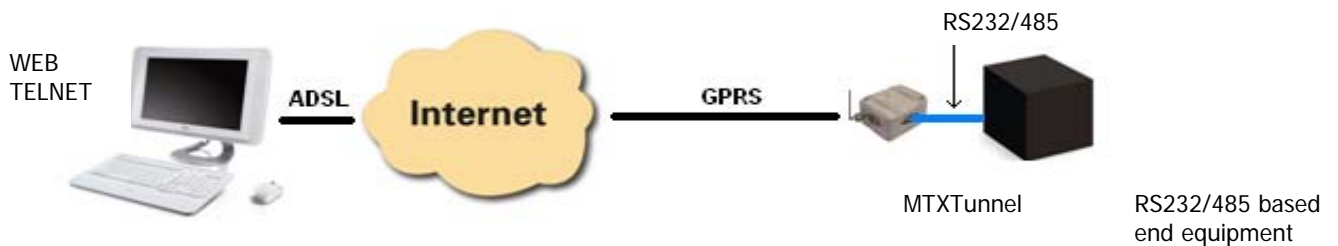


## MTX-TUNNEL 5.1

MTX-TUNNEL is an application running into GSM-GPRS Terminal based on Cinterion TC65i designed for communication with remote devices, which have RS232/I2C-SPI ports.

It is a frequent case, when remote meters, network switches, routers or other devices need to get connected to the network, but they only have RS232 port and the only possible way to reach them is using GSM/GPRS Network. MTX-TUNNEL is ready-to-go solution for such cases.



It acts as a transparent RS232 port. You will see your remote devices as directly connected to the computer. MTX-TUNNEL 5.1 has lot of extra features like WebServer, SMS telemetry, Telnet, etc... useful in all M2M scenarios.

### GPRS-SERIAL TUNNEL

- TCP Client
- TCP Server
- UDP Client / Server

### GPRS connection modes:

- Permanent mode
- Under request (SMS or lost call, authorized or not phone numbers)
- Change on an input digital level
- An analog input is out of selected level window (MIN, MAX)
- Serial data present on RS232/RS485 port
- Scheduled date/hour timing

### WebServer

### Telnet

### SMS Alarms and Output control

### IPs dynamic resolution:

- DynDNS
- Private DNS
- SMS

### SSL Security

### Firewall IP

### User API

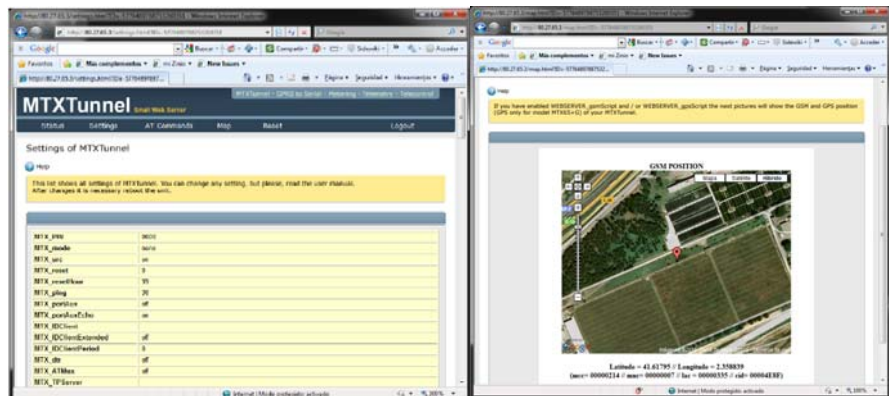
### Telemetry (GPIOs and GPS)

### GRPS-I2C/SPI tunnel

### Serial RS232/485 – HTTP tunnel

### Serial RS232/485 – SMS tunnel

### Timing synchronization



```
Telnet mtxtunnel.dyndns.org
#login:admin
#password:1234
Welcome to MTXTunnel
#AT
AT
OK
#ATI
ATI
Cinterion
TC65i
REVISION 01.100

OK
#AT+CSQ
AT+CSQ
+CSQ: 27,99

OK
#_
```

MTX-TUNNEL 5 is Hardware Multiplatform can be installed on specific featured MTX-Terminals models

**MTX-65i**

Generic serial-GPRS tunnel (Gateway) plus telemetry+SMS control



**MTX-IND**

If RS485/RS422 bus is needed. Also relays are provided.



**MTX-65ULP**

Ideal for Ultra-Low-Power application (2uA)



**MTX-65+G**

If you need GPS positioning



More information

Matrix Electronica  
Alejandro Sanchez 109  
28019 Madrid-Spain  
Tel. +34915602737  
[www.MTX-Terminals.com](http://www.MTX-Terminals.com)  
[gsm-support@matrix.es](mailto:gsm-support@matrix.es)