

Oil & Gas Products

Where Is It and What Is It Doing?



ASSET MONITOR APPLICATIONS

Location of assets at set intervals, report sensor's data from your asset, report when leaving a Geofence, and excessive speed, wandering away from a starting point. Satellite or Cell based flow meter reports, pump run times, tank level sensing. Review all Reports from any web based computer.

REPORTING

- Continuous tracking and tracing.
- Determine precise location & Sensory feedback of your asset.
- Flow Rates Frac Jobx. Pump Status. Tank Level Monitoring.
- Corporate multi-user access permissions and notifications.
- Multi user Corporate access and permissions.
- Monitor Legitimate Usage of Assets.
- Reduce Insurance Rates.

SENSING

- Flow Meters: Modbus, Serial, Pulsed output. GPM, Barrels per Day, total Flow.
- Silo or Oil Brine Tank Level Sensors. Ultrasonic, 4-20mA, Serial, Discrete.
- ECM J1939, OBD2 real time telemetry of engine data and most vehicle sensors.
- ECM option to read faults codes, rpm, engine hours, speed, odometer.
- Discrete Inputs and Outputs for remote control.
- Capable of Reading many types of sensors.

BENEFITS

- Eliminate need to visit remote locations to take measurements.
- Track your Assets to Improve Business Processes.
- Environmental Responsibility through fleet management.
- Monitor Non productive Idle Time.
- Satisfy Government Regulations.
- Improved Customer Service.
- Better ROI.
- Lower Fuel Expenses. GPM. Emission Reporting.
- Powerful Alert Capabilities.
- Fleet Overview.
- Real time Alerts.
- Maintenance Reporting.
- Integrate planning & Operational Data.
- Made in USA.
- Low Operational Costs.
- Very long battery life.

SUPPORT

- Live Customer support.
- Nationwide and International Coverage available.
- No activation fees.



Cell Based



Satellite Based

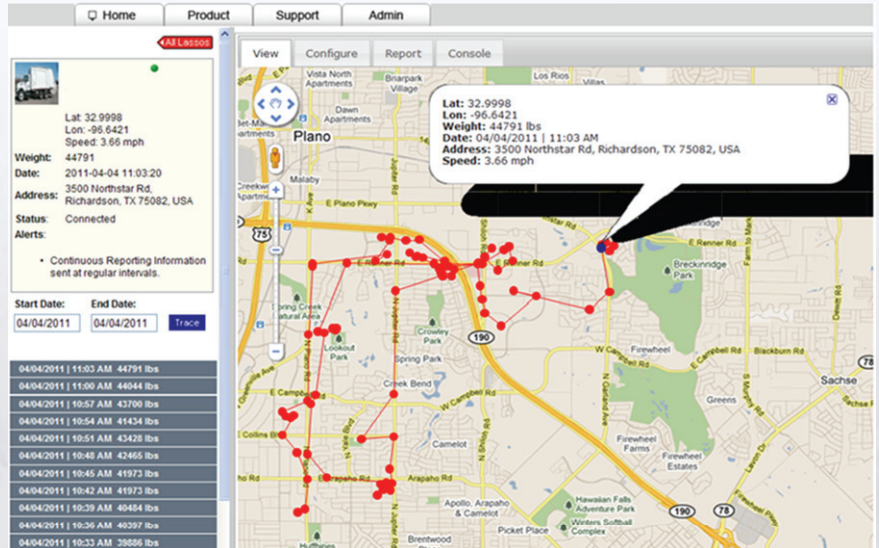
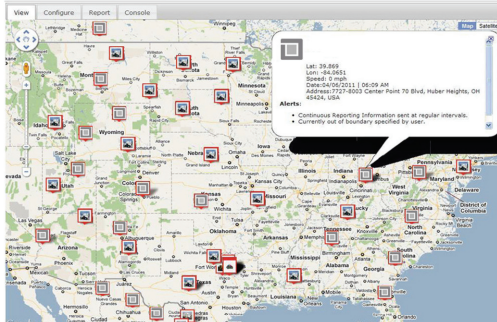
GPS Telemetry Solutions

Patents Pending

Asset Monitoring



Lasso Technologies provides satellite and cellular based wireless communications technologies that can be used for asset management, location, and machine status.



Asset Real Time Status

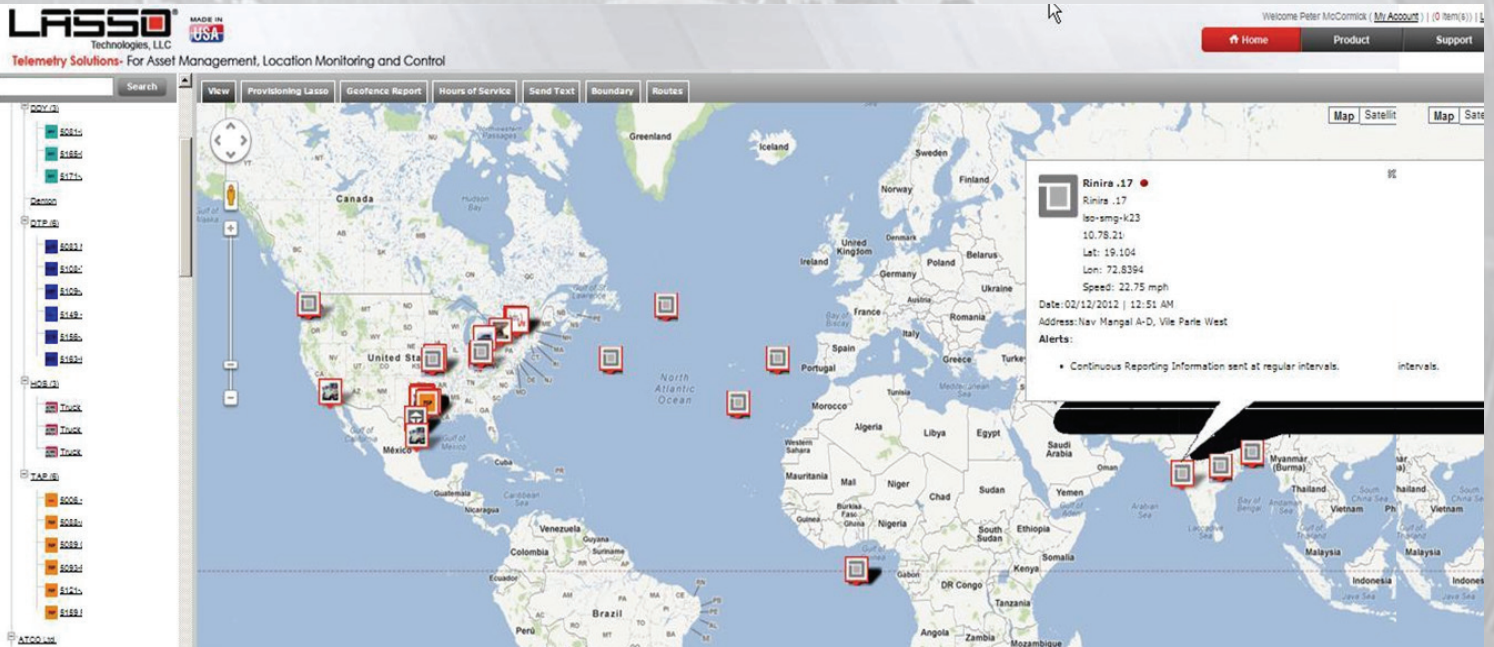
MONITORING

- Location
- Access
- Payload weight
- Flow, Temperature, On/Off signals
- Pilferage & Intrusion
- Fixed or Movable
- Motion Detection
- Engine Run Time
- Monitor engine run time
- 3+ Year Battery Life
- Diagnostics and Low Battery Reporting

Bread Crumb and Real Time Tracking with Addresses.

SATELITE PROVIDER

Globalstar is the world's largest provider of mobile satellite voice and data services. Globalstar has 52 low earth orbit satellites and are affiliated with Loral, Qualcomm, Alcatel, Vodaphone, Hyundai and others.



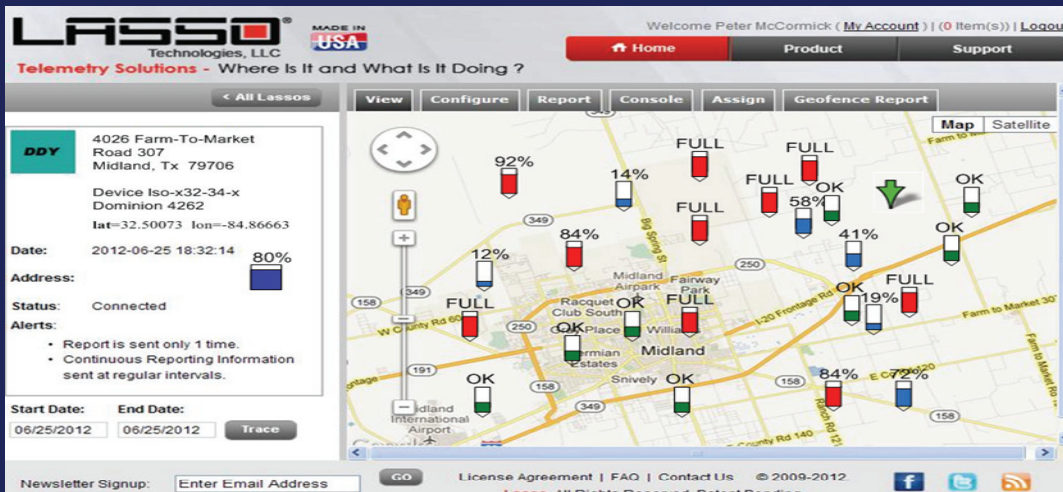
International Tracking and Monitoring of your Assets

Cell or Satellite Tank Level Monitoring

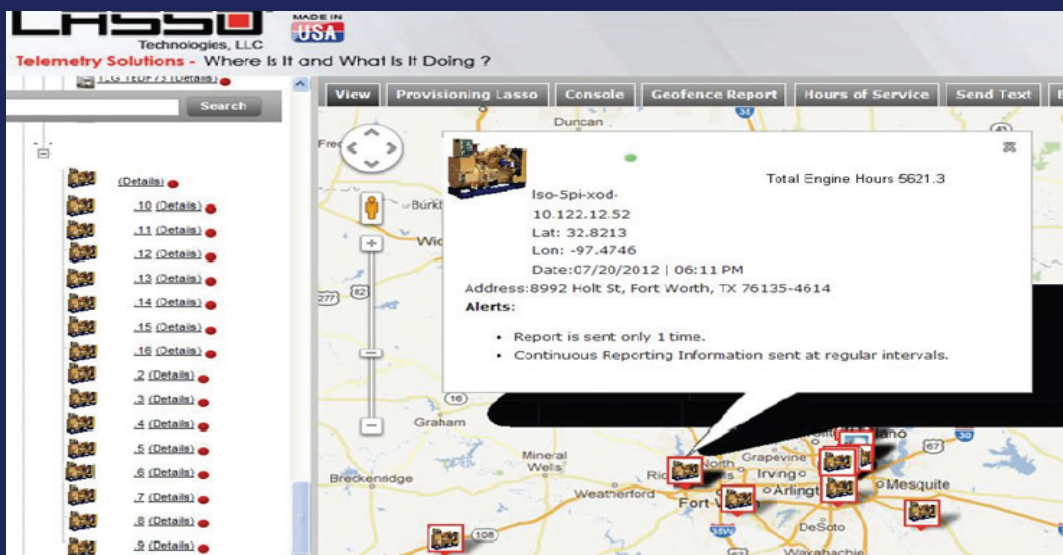


TANK LEVEL

- Monitor Brine-Oil tank levels remotely.
- Email, and automated phone call alerts.
- Satellite based so it can be used anywhere.
- Solar powered with battery backup for years of life.
- Ultrasonic Level sensor impervious to harsh chemicals.
- Quick ROI: Eliminates frequent tank checks.
- Click on any map indicator for details and address of location.

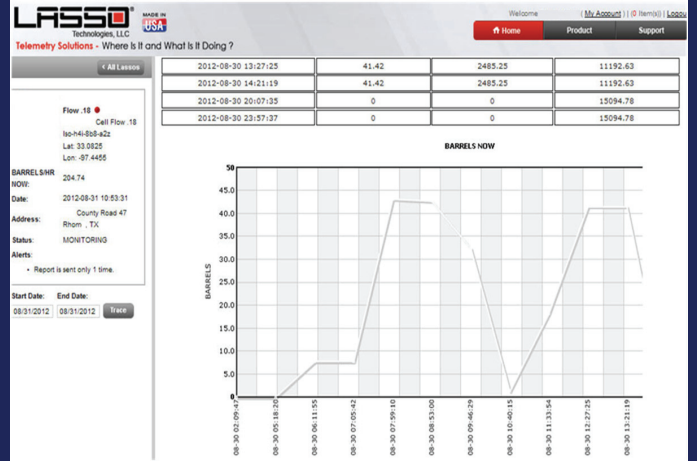
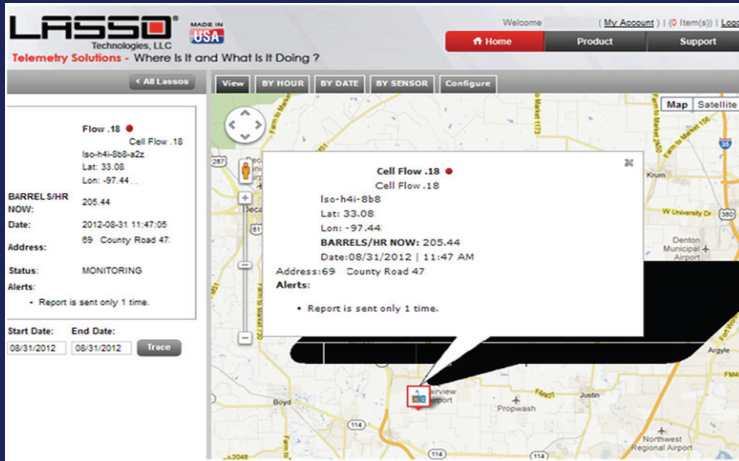


% Indication of Tank Level.
Red if Full and needs service. Blue if OK.



Quick Overview of All Assets

Cell or Satellite Water Flow Monitoring



Asset Overview with Current Flow Rates

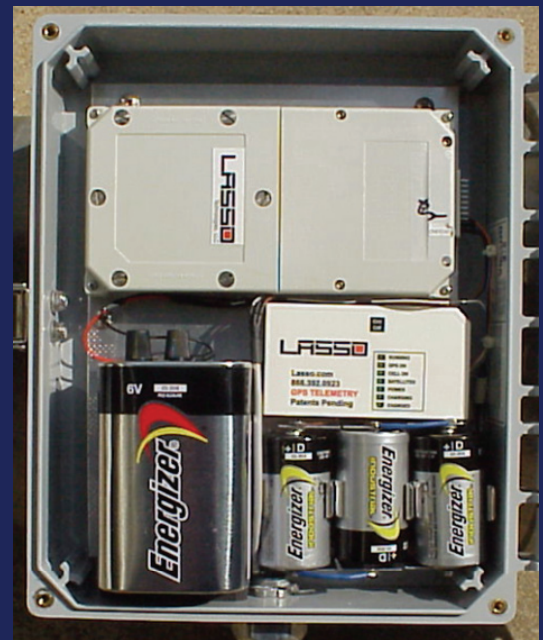
Select any Time Frame with Graphs

DATE	BARRELS NOW	BARRELS/HR	TOTAL BARRELS
2012-08-27 07:28:01	0	0	0
2012-08-27 08:21:32	11.32	679.02	678.99
2012-08-27 09:15:15	44.66	2679.88	3358.86
2012-08-27 10:08:59	44.66	2679.88	3358.86
2012-08-27 11:02:34	45.75	2745.13	6104.02
2012-08-27 11:56:00	35.91	2154.75	8258.79
2012-08-27 12:49:43	0	0.01	8258.79
2012-08-27 13:43:32	0.94	56.3	8315.08
2012-08-27 14:37:03	21.87	1312.36	9627.45
2012-08-27 15:30:42	45.77	2745.94	12373.38
2012-08-27 16:24:12	45.49	2729.24	15102.64
2012-08-27 17:17:50	45.49	2729.24	15102.64
2012-08-27 18:12:14	21.09	1265.61	16368.23



Works with Cameron, Omega, Seametrics & other sensors

Flow Rates Each Hour During Frac Job



Cell or Satellite Pump, Level, Flow Monitoring

LESSO Technologies, LLC **MADE IN USA** Welcome (My Account) | (0 Item(s)) | Logout

Telemetry Solutions - Where Is It and What Is It Doing ?

< All Lassos View Monitor Spreadsheet Phone List Monitor All Configure

Start Date End Date

Date	Pump 1 Starts	Pump 2 Starts	Runtime Hours Pump1	Runtime Hours Pump2
02-Jul-12	0	1	7.6	16.3
03-Jul-12	1	0	12.4	23.6
04-Jul-12	0	0	23.9	23.9
05-Jul-12	0	0	24	24
06-Jul-12	0	0	9.8	9.8
07-Jul-12	0	0	0	0
08-Jul-12	0	0	0	0

.53

iso-9n9-162
Lat: 32.85
Lon: -96.7

Date: 2012-07-09 10:56:30
Address: Colgate Ave, Dallas, TX
Status: Connected
Alerts:
• Continuous Reporting Information sent at regular intervals.

Start Date: End Date:

Pump Run Times by Day. Start Stop Frequency.

Select Date

CELL CONNECTED **BAD** SATELLITE **OK** WATER LEVEL **OK** POWER **BAD** Test Unit .50

	Runtime Hours		Starts		Cumulative	
	Today	Previous Day	Today	Previous Day	Runtime Hours	Starts
Pump1	4.2	1.6	41	41	236	7
Pump2	5.7	3.8	171	12	232.9	5
Current Rate		Total Today		Total Previous Day		
Flow	2165 MGD		698 Gallons		784 Gallons	
Current Level						
Level	12.6 Feet					

CELL CONNECTED **OK** SATELLITE **OK** WATER LEVEL **OK** POWER **OK** Houston School Road LS .51

	Runtime Hours		Starts		Cumulative	
	Today	Previous Day	Today	Previous Day	Runtime Hours	Starts
Pump1	7.7	3.5	14	17	176.7	26
Pump2	1.7	0.1	21	45	90.5	4
Current Rate		Total Today		Total Previous Day		
Flow	2115 GPM		1254 Gallons		365 Gallons	
Current Level						
Level	6.7 FT					

CELL CONNECTED **OK** SATELLITE **OK** WATER LEVEL **OK** POWER **OK** Test Unit .52

	Runtime Hours		Starts		Cumulative	
	Today	Previous Day	Today	Previous Day	Runtime Hours	Starts
Pump1	7.7	3.6	74	2	176.9	4
Pump2	1.7	0.5	12	2	90.9	5
Current Rate		Total Today		Total Previous Day		
Flow	2146 GPM		7412 Gallons		8741 Gallons	
Current Level						
Level	41.2 Ft					

Overview of all Pumps, Flow Meters, Level Conditions

Cell or Satellite Based Pump or Generator Engine Run Time

LASSO Technologies, LLC MADE IN USA
Telemetry Solutions - Where Is It and What Is It Doing ?

View | Provisioning Lasso | Console | Geofence Report | Hours of Service | Send Text | Bo

Search

(Details) ●

- 10 (Details) ●
- 11 (Details) ●
- 12 (Details) ●
- 13 (Details) ●
- 14 (Details) ●
- 15 (Details) ●
- 16 (Details) ●
- 2 (Details) ●
- 3 (Details) ●
- 4 (Details) ●
- 5 (Details) ●
- 6 (Details) ●
- 7 (Details) ●
- 8 (Details) ●
- 9 (Details) ●

Total Engine Hours 5621.3

iso-5pi-xod-
10.122.12.52
Lat: 32.8213
Lon: -97.4746
Date: 07/20/2012 | 06:11 PM
Address: 8992 Holt St, Fort Worth, TX 76135-4614

Alerts:

- Report is sent only 1 time.
- Continuous Reporting Information sent at regular intervals.

MAP | BY HOUR | BY DATE | BY SENSOR | ENGINE RUN TIME

LASSO Technologies, LLC MADE IN USA

Welcome Peter McCormick ([My Account](#)) | (0)

Home | Product

Telemetry Solutions - Where Is It and What Is It Doing ?

Search

MAP | BY HOUR | BY DATE | BY SENSOR | ENGINE RUN TIME

PUMP 1036 | Select Date for construction graph 03/28/2011 | Show Graph

Ignition ON

3 am | 6 am | 9 am | 12 pm | 3 pm | 6 pm | 9 pm

Enter Email Address | GO | License Agreement | FAQ | Contact Us | © 2009-2012. Lasso. All Rights Reserved. Patent Pending | Facebook