

# Transaction Terminal 93 POS



## Overview

Visiontek 93 POS a mobile handheld data capture terminal to process and transmit information to host computers in real time. The simple user-friendly design allows you to operate with ease and is light in weight and handy. This can be integrated with external barcode reader and built-in contact less smart card reader to enhance flexibility in operations. built-in Impact printer enables you to print receipt for the transaction. This 93 POS has clear white backlit FSTN LCD display and keypad with good user interface. Collected data can be uploaded to a PC via RS-232 serial interface or to a host PC via GSM interface. Hence increases the velocity of business decisions.

ARM9 32 bit Processor

Impact Printer

GSM / LAN

Contact-less Reader

## Application Areas

- Ticketing
- Field data collection
- Inventory management
- Order booking
- Order processing
- Market survey
- Utility meter reading
- Spot billing applications
- Receipt printing
- Loyalty applications
- Parking
- Tax collections
- Pigmy applications
- Micro finance



31 Keys membrane Keypad

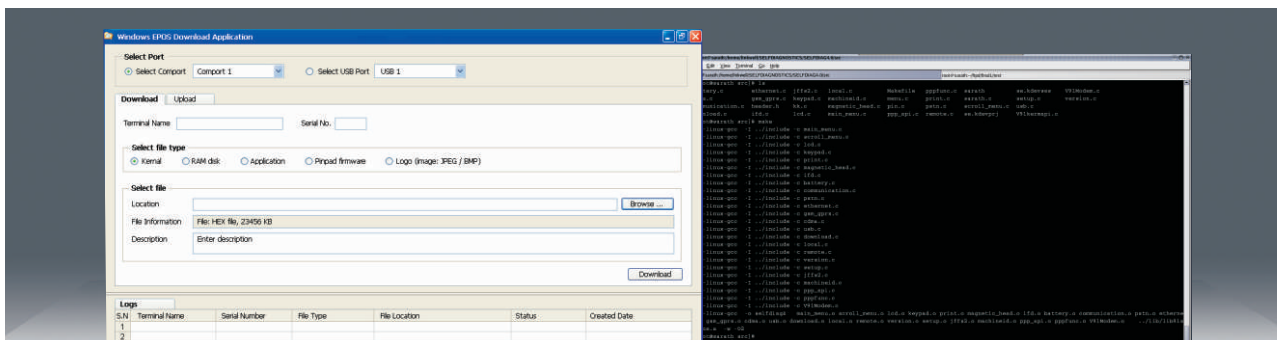


Contact-less Reader

# Features

- 31-Keys ergonomically designed keypad
- Compact and comprehensive
- Large bright graphical display
- Self Diagnostic features
- RS232 communication port
- USB Device (Host)
- Hardware ID for application software licensing control
- Contact less reader
- Impact printer
- Inbuilt battery & charger
- Software development kit

## Supporting Utilities



## Specifications

Display	128 x 64 pixel Graphic FTSN LCD with backlight
Processor	32 bit ARM9 Core CPU @ 400MHz
Memory	128MB(mDDR) SDRAM ; 256MB Flash Memory
Operating System	Linux OS (2.6.31)
Keypad	31-Keys keypad including 13 Function keys and 3 Command keys, shift key, power key and paper feed with LED back lighting
Printer	Impact printer; 24 column, 144 dots/line; 5 l/s±20%; 57 mm (2.25 in) wide paper;
Contact-less Reader	* Card interface: Felica and ISO 14443A/ MIFARE, Supports NFC IP-1
Interface / Connectors	1x RS-232 * 1x USB OTG ( Mini connector) 1x LAN (RJ45 connector) 1x Micro SD card connector 1x 3.5 mm stereo jack socket 1x USB host USB Host ( mini connector)
Communication Modules	LAN 10 BASE-T (10Mbps) (Standard RJ45 connection) * GSM / GPRS, (Dual band) (SMA female antenna connection)
Power Adaptor	AC input 100 - 240V, 50/60Hz DC output 9V, 2.2A
Battery	Li-ion 7.4V, 2600mAh
Enclosure	ABS+PC
Temperature	Operating: 0°C to 55°C
Humidity	95% RH non condensing
Immunity	IEC 61000-4-2, Level 3 IEC 61000-4-3, IEC 61000-4-4, IEC 61000-4-5, IEC 61000-4-6, IEC 61000-4-8, IEC 61000-4-9, all Level 4
Safety	CE
Dimensions in mm	253 x 100 x 76 (L x W x H)
Weight	785.0g

Note: We pursue a policy of continuous research and product development. Specifications and features are subject to change without notice

\*Indicates optional feature



Linkwell Telesystems Pvt. Ltd. Gowra Klassic, Begumpet, Hyderabad 500 016, Andhra Pradesh, INDIA  
Telephone: +91 40 66388000, Fax: +91 40 66388006, e-mail: [info@visiontek.co.in](mailto:info@visiontek.co.in) [www.visiontek.co.in](http://www.visiontek.co.in)