

## Navigo Explorer WebMap

**Advanced Browser-based GPS/AVL Fleet Management System**  
Intelligence, Versatility and Control

The new Navigo Explorer WebMap Platform is the much anticipated release of the latest software component to the LTI Navigo Fleet Management System. The Navigo Explorer WebMap is the most advanced browser based GPS/AVL Fleet Management platform on the market today and incorporates all of the functionality and features that fleet managers have been asking for.

All of the map and display functionality users have come to expect from a web-based map are available on the Navigo Explorer. The Navigo Explorer is completely browser based and requires no third party tools or drivers to be loaded on the client side workstation.

### **TOTAL AWARENESS. POWERFUL RESULTS.**

Cut costs, advance timelines and improve overall quality of work with Location Technologies:

### Completely Browser Based

The Navigo Explorer WebMap Platform is powered by Location Technologies' New SQL-based Wireless Data Server and Events Engine for automatic monitoring and control of fleet activity. The new LTWDS can utilize MS-SQL or the economical open-sourced MySQL. The Event Engine monitors all specified vehicle activities and takes predefined actions based on the condition of the monitored activity.

### Public Facing Web Display

A public display to enhance public awareness and safety during critical operations such as storms and snow events.

### Integrate Your Map Data

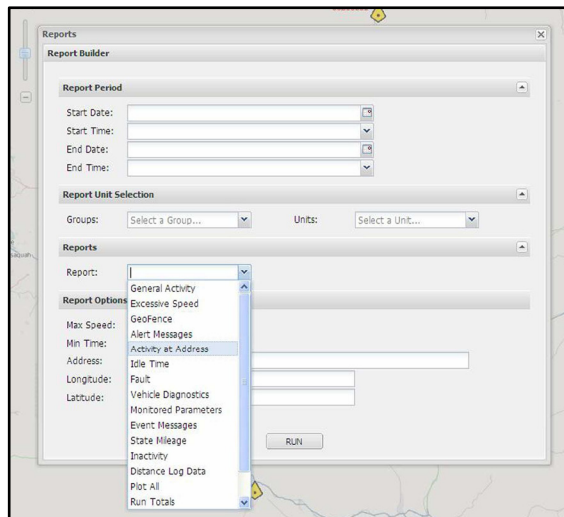
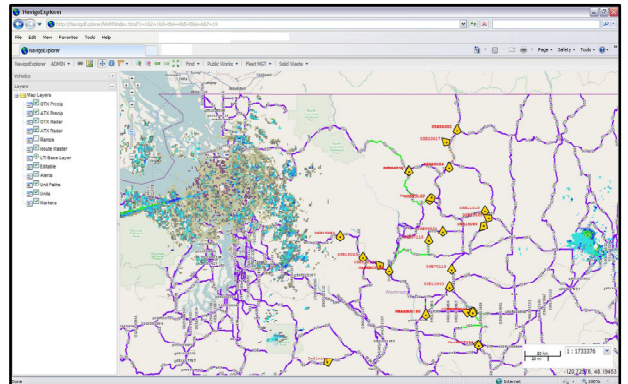
Location Technologies has almost two decades of experience successfully utilizing virtually every type of GIS and Fleet Operations data including WMS, and SQL based systems.

### Real-Time NEXRAD Radar Feed Overlay

Quickly display storm intensities and precipitation totals with storm reflectivity and precipitation amounts. Also shows all weather service produced watch and warning boxes.

### Automatic Route Tracking

Track operations events and field activity automatically with new route matching functions. Track route completion by percentage and using a convenient color coding scheme that colors route segments based on the time elapsed since their last operations/ service event. Fast 24-hour activity plots give you a useful and current snapshot of your fleet operations.



### Comprehensive Report Manager

Dozens of reports detailing all aspects of the fleets operation are available.

### GeoCoding

The Navigo Explorer WebMap supports point and Interpolation based Geocoding, as well as path or road-mile post based Geocoding.

### Fleet Management Module

The Fleet Management Lite allows for tracking of odometer values, fuel usage, and material usage for all industry specific fleet operation activities and is integrated directly in the Navigo Explorer product. Vehicles equipped with our optional OBD interface can monitor all engine diagnostic information including engine fault codes as they appear.

## Navigo Explorer WebMap

Advanced Browser-based GPS/AVL Fleet Management System  
Intelligence, Versatility, and Control

Direct Your Fleet With Our Industry Specific Management Modules

General Fleet Management, Public Works, Solid Waste, Utilities, Public Safety, Transit Systems, and Work Order Management Systems.

### Fleet Management

The full Fleet Manager Module for the Navigo Explorer WebMap allows for the complete management of all scheduled and unscheduled service and repairs, tracks personnel, materials, and suppliers, and is also a browserbased application requiring no software to be loaded on the users workstation.

### Public Works

With the Public Works Module option the user is able to monitor all the Route-based operations commonly performed such as winter weather and ice operations, sweepers, paint trucks, weed spraying, chippers/sealers, graders, sanitary clean out, and much more.

As any Public Works operations event progresses and roads/areas are treated the Server will continually update the Route Layer database with current operations, treatment times, and amounts. Material usage totals, distances travelled, and fuel usage may be reported using the ADMIN-Reports menu item and running the appropriate report from the Report Builder window.

### Solid Waste

The Solid Waste Operations Module can directly monitor compaction, pickup arm extension, and landfill operation. Route exceptions may also be monitored through the use of a MDT in the vehicle. Here the driver will send a status indicating the exception. For example Can-Not-Out or Yard-Waste-In-Can could be sent in and recorded at the server. If a customer calls in later in the day to find out why their trash was not picked a quick search around the address will determine that a Can-Not-Out status was indicated and the time it was sent in.

### Utilities

Our Utilities Manager module option offers a generic work order management system that may be adapted for a variety of uses. The option can interface directly to on-board Garmin personal navigation devices to provide invehicle guidance, multiple stop optimization, driver log-in, statusing, and generic messaging.

### Transit Systems

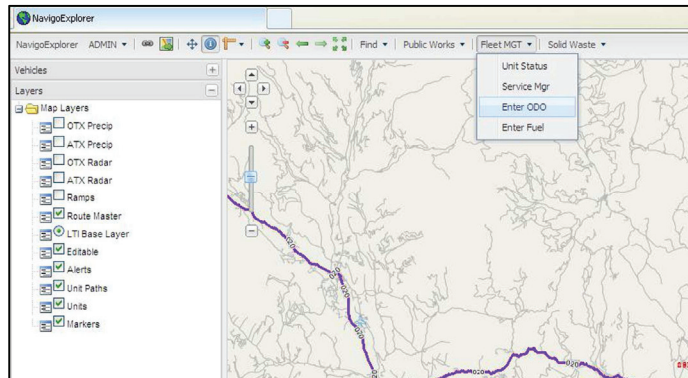
Location Technologies' Transit Module option for the Navigo Explorer WebMap offers Route Compliance, Automatic Passenger Counting, Fare Box integration, and pre-trip inspection logging. Our Transit Server Program will calculate next stop ETA's and distribute messaging information to remote stop displays and kiosks.

### Public Safety

Public Safety related module add-ins include E911 system integration for display of call location from cell phones and land lines, integration with CAD systems, and monitoring vehicle activity such as sirens, lights, shotgun racks, and equipment usage.

### Mobile Data Terminal and Personal Navigation Device Integration

LTI offers a variety of mobile data options. These include our own LTMDC Mobile Data Computer, LTMDT Mobile Data Terminal, Laptop interfaces, and our Garmin Navigation Device interface.



www.loctech.com  
Ph: 816.741.3169  
info@loctech.com

**Location  
Technologies**

**DISCOVER THE INTELLIGENCE, VERSATILITY AND CONTROL  
THAT WILL DRAMATICALLY IMPROVE THE WAY YOU OPERATE**

Connect with Location Technologies at [sales@loctech.com](mailto:sales@loctech.com) or call 816.741.3169 today to learn how these customized solutions can streamline your operations.