

THANK YOU for purchasing your new GPS vehicle tracking system!

Installation of your new GPS tracking system couldn't be easier – just follow these simple steps.

LED indicator lamps

The COMTRAC "LIVE" OBD includes a J1962 compliant OBDII connector, a micro USB I/O port and three LED indicator lamps representing OBDII, GSM and GPS status. The following table describes the COMTRAC "LIVE" OBD's LED operation.

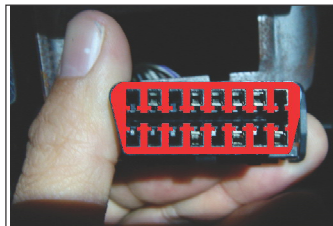
Condition	Red LED OBD	Green LED GSM	Blue LED GPS
Initial power cycle	Fast blink		
Pwr / protocol discovered	Slow blink		
Searching for cell signal		Fast blink	
Signal found / transmitting		Slow blink	
Acquiring satellite signal			Fast blink
Satellite signal acquired			Slow blink

1. COMTRAC "LIVE" OBD device installation

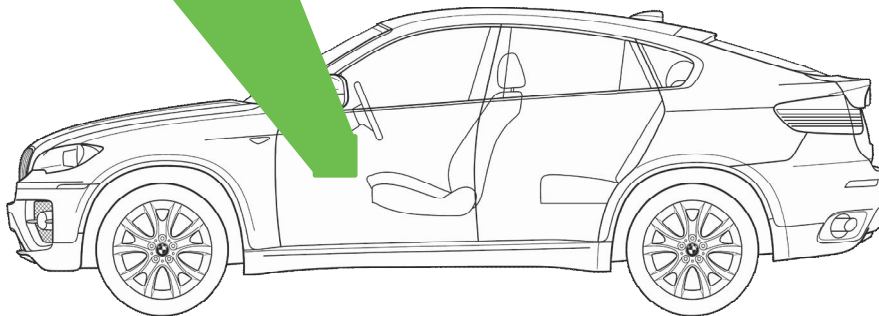
Locate the OBDII socket. (This location will vary from vehicle to vehicle but generally can be located below the steering column / instrument cluster.)



common location of OBD connectors

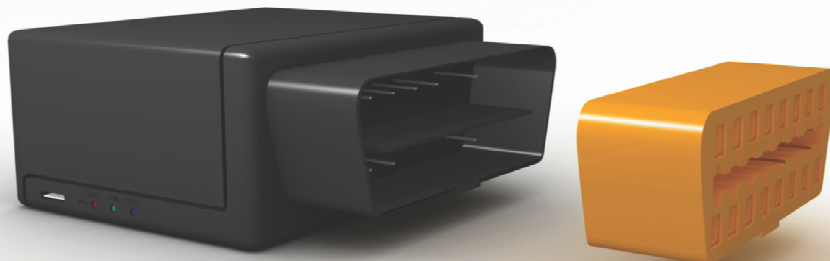


16 pin OBDII type connector



2.

Firmly insert the COMTRAC "LIVE" OBD device into the OBDII socket. After the device is installed please ensure that the device is working properly as evidenced by a GPS lock and cellular connection as indicated by the LED lamps on the side of the device.



*The micro USB (2.0) connector on this device is intended for troubleshooting and cannot be used to charge the device.

The COMTRAC "LIVE" OBD device **IS NOT** a sealed or waterproof device. Special care must be taken to ensure that the device is kept free from dust and moisture.

Failure to follow any of the above warnings could result in the unit to cease functionality and will result in the revocation of all warranties.

((Please note that '06-'07 Ford F-150 trucks have been known to have faulty wiring and it is strongly advised that all manufacturers' recalls be brought up to date by a qualified service company PRIOR to installation of the COMTRAC "LIVE" OBD device.))

Please verify that your device is activated prior to installation.

To begin viewing the vehicle's location, simply visit [The ComTrac™ Total Tracking Solution](#) online and provide your User ID and Password to login. Our device transmits once every 30 minutes when not in motion, or once every 5 or 10 seconds (depending on your rate plan) when the vehicle is moving faster than 3 mph...so bear this in mind while waiting for the vehicle marker to appear on your map. Driving the vehicle around the block will assist in its first data transmission.

If you have any questions or encounter difficulties with this system, we encourage you to use our "LIVE support" feature built into [The ComTrac™ Total Tracking Solution](#). Technical Support is available 7 a.m. to 7 p.m. CST, Monday thru Friday and on Saturdays from 9 a.m. to 4 p.m. CST by calling 630.359.5804

