

WWWENDING

CHECK YOUR MACHINES HOW,



WHEN AND WHERE YOU WANT.



GSM
GPRS



YOUR VENDING MACHINE
EQUIPPED WITH
THE CONTROL UNIT
"VENDING BOX"

THE BITX DATA CENTER
IN THE CLOUD



MONEYTOR FEED

The integration channel with your management system.



MONEYTOR WEB

Control and management by PC, tablet and smartphone.



KNOW THE STATUS OF YOUR BUSINESS
HOW, WHEN AND WHERE YOU WANT



MONEYTOR IS A READY-TO-USE TELEMETRY SYSTEM FOR THE VENDING INDUSTRY THAT ENABLES A CONNECTION BETWEEN ANY KIND OF VENDING MACHINE AND/OR PAYMENT SYSTEM AND A CENTRALIZED WEB SOLUTION, BY MEANS OF A GSM/GPRS WIRELESS LINK, IN ORDER TO DISPLAY SALES AND ALARMS DATA.

THIS INFORMATION, PROVIDED IN REAL TIME, ALLOWS OPERATORS TO SPEED UP THEIR DECISION-MAKING PROCESS AND MAKES BUSINESS MANAGEMENT EASIER AND MORE EFFICIENT BY OPTIMIZING RESOURCE ALLOCATION.



MONEYTOR
ONLINE MANAGEMENT MADE SIMPLE

THE MONEYTOR OFFER INCLUDES BOTH HARDWARE AND SOFTWARE. THE FIRST, A GSM / GPRS UNIT, IS PURCHASED WHEN THE CUSTOMER SIGNS THE CONTRACT, THE SECOND IS PROVIDED IN SAAS MODE (SOFTWARE AS A SERVICE) AND BASED ON THREE DIFFERENT ACCESS LEVELS - BASIC, ADVANCED AND PREMIUM - EACH ONE WITH A DIFFERENT FEATURE SET.

Telemetry data can be accessed in two different ways:

MONEYTOR WEB

Via a simple and intuitive web interface that allows monitoring and management of machines 24/7, from any PC and/or mobile device

MONEYTOR FEED

For customers using a specific software management system (ERP), specific integration tools and methods are provided.

OFFER - SOFTWARE AS A SERVICE



THE FOLLOWING TABLE SUMMARIZES THE DIFFERENT AVAILABLE PACKAGES IN EITHER WEB AND FEED (ERP INTEGRATION) MODE, AS WELL AS THE FUNCTIONALITIES PROVIDED BY EACH OF THEM.

	MONEYTOR WEB			MONEYTOR FEED		
	Premium	Advanced	Basic	Premium	Advanced	Basic
Home Page	•	•	•	•	•	•
Data Management	•	•	•	•	•	
Sales	•	•	•	•		
Sales Charts	•	•		•		
Alerts	•	•		•	•	
Cash Track	•			•		
Email Notifications	•			•		
Sales				•	•	•
Alerts				•	•	
Cash Track				•		
Remote Price Change				•		

The Moneytor system is available in Italian, English, Spanish, French and German.

PACKAGES AND FUNCTIONALITIES



Premium



Advanced



Basic

THE MONEYTOR REMOTE CONTROL SYSTEM IMPROVES COMPANY EFFICIENCY BY AIDING OPERATIONS IN THE TOUGH, HIGHLY COMPETITIVE VENDING MARKET:

- Check the status of each machine via web, in real time, with the possibility of changing settings and parameters
- Set up automatic alerts to become aware of, and resolve, potential losses in sales
- Timely maintenance work with drastic reduction of machine downtime
- Up-to-date sales data, money collection and products in real time for each vending machine, geographic area, and time frame. Everything under control, 24/24
- More efficient and timely supply planning, elimination of "out of stock" scenarios and sales maximization

ADVANTAGES



THE MONEYTOR SYSTEM IS SUBJECT TO CONSTANT CERTIFICATION FOR "PLUG&PLAY" COMMUNICATIONS WITH MAJOR INTERNATIONAL MANUFACTURERS OF VENDING MACHINES AND PAYMENT SYSTEMS.

SUPPORTED DEVICES

Main certified manufacturers are: Adimac, Bianchi Vending, Coges, Crane, Ducale, Fage, Fas, GPE, Jofemar, Manea, Mei, Necta (N&W), NRI, Saeco, Sanden Vendo.

INTEGRATION WITH MANAGEMENT SYSTEMS

Easy integration with any business management software (ERP), using standard protocols. Moneytor is already integrated with some of the best-known management software in the business: GD Gestione Distributori by Target Informatica and Vega Windows by Digisoft.

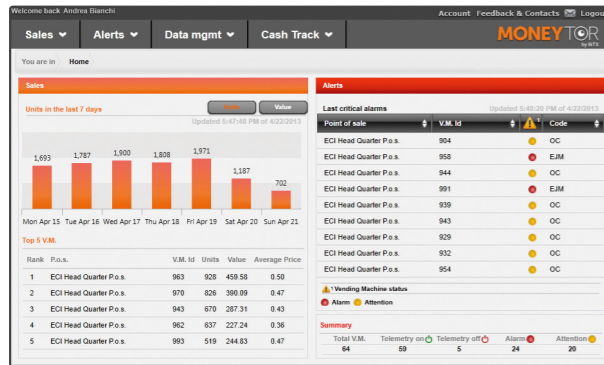
SIMPLE AND COMPATIBLE

REMOTE CONTROL UNIT VENDING BOX

In order to support the specific needs of the Vending industry, Moneytor has designed a GPRS terminal with unique features, such as:

- a power outage detection system
- serial ports for the simultaneous connection to both the VM and the "Executive" payment systems
- two programmable buttons for cash withdrawals and VM stock-up activities
- small size
- magnetic antenna





HomePage

Key information overview about each VM

The Sales page displays a table of sales statistics for each VM. The table includes columns for VM ID, Point of Sale (P.o.s.), Customer, Area, and sales data for the current and previous quarters.

VM	P.o.s.	Customer	Area	Q1 2013	Q2 2013	Average Price	Units
963	ECI Head Quarter	ECI Head Quarter P.o.s.	963	15	21.00	1.40	15
968	ECI Head Quarter	ECI Head Quarter P.o.s.	968	61	77.35	1.26	61
944	ECI Head Quarter	ECI Head Quarter P.o.s.	944	26	21.00	7.20	26
991	ECI Head Quarter	ECI Head Quarter P.o.s.	991	47	62.10	1.32	47
939	ECI Head Quarter	ECI Head Quarter P.o.s.	939	46	56.70	1.23	46
943	ECI Head Quarter	ECI Head Quarter P.o.s.	943	48	61.00	0.76	48
929	ECI Head Quarter	ECI Head Quarter P.o.s.	929	400	574.50	0.41	400
932	ECI Head Quarter	ECI Head Quarter P.o.s.	932	25	30.30	1.14	25
954	ECI Head Quarter	ECI Head Quarter P.o.s.	954	198	161.00	0.81	198
Total VM				1000	1,207.65	0.88	

Sales

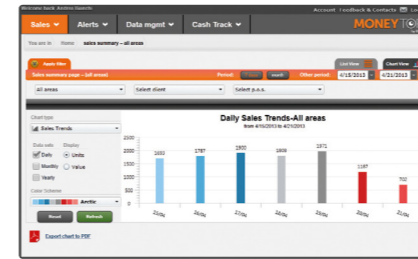
View sales statistics in units or value for each VM, "Point of Sale", "Customer" or "Area", as well as time interval

The Vending Machine status page provides a detailed view of each machine's status. The table includes columns for VM ID, P.o.s., Customer, Area, Machine Status, and Location.

VM	P.o.s.	Customer	Area	Machine Status	Location
963	ECI Head Quarter	ECI Head Quarter P.o.s.	963	Normal Operation	Normal
968	ECI Head Quarter	ECI Head Quarter P.o.s.	968	Normal Operation	Normal
944	ECI Head Quarter	ECI Head Quarter P.o.s.	944	Normal Operation	Normal
991	ECI Head Quarter	ECI Head Quarter P.o.s.	991	Normal Operation	Normal
939	ECI Head Quarter	ECI Head Quarter P.o.s.	939	Normal Operation	Normal
943	ECI Head Quarter	ECI Head Quarter P.o.s.	943	Normal Operation	Normal
929	ECI Head Quarter	ECI Head Quarter P.o.s.	929	Normal Operation	Normal
932	ECI Head Quarter	ECI Head Quarter P.o.s.	932	Normal Operation	Normal
954	ECI Head Quarter	ECI Head Quarter P.o.s.	954	Normal Operation	Normal

E-mail notifications

Configure a series of alerts via e-mail, based on several parameters



Sales Charts

Generate and display three different types of charts, exportable in pdf format

The Data Management page provides a form for creating a new Vending Machine. The form includes fields for VM ID, P.o.s., Customer, Area, Machine Status, Location, and V.M. manufacturer. A 'Create new VM' button is visible at the bottom.

Data Management

Provision new VMs and assign certain parameters to each one. Associate technical, or refiller, staff to each VM

The Alerts page displays a table of open alarms. The table includes columns for VM ID, P.o.s., Customer, Area, Alarm Type, and Alarm Time.

VM	P.o.s.	Customer	Area	Alarm Type	Alarm Time
963	ECI Head Quarter	ECI Head Quarter P.o.s.	963	OC No Issued	4/22/2013 4:04 PM
944	ECI Head Quarter	ECI Head Quarter P.o.s.	944	EM, 100% Not Responding	4/19/2013 1:31 PM
963	ECI Head Quarter	ECI Head Quarter P.o.s.	963	EM, No Cash	4/22/2013 12:01 PM
963	ECI Head Quarter	ECI Head Quarter P.o.s.	963	OC No Issued	4/22/2013 12:01 PM

Alerts

View a list of "open" alarms, generated by the VM (EVA-DTS alarms) or by the Vending Box

The Cash Track page displays a table of cash status for each VM. The table includes columns for VM ID, P.o.s., Customer, Area, Cash Status, and Cash Amount.

VM	P.o.s.	Customer	Area	Cash Status	Cash Amount
963	ECI Head Quarter	ECI Head Quarter P.o.s.	963	Normal	0.00
968	ECI Head Quarter	ECI Head Quarter P.o.s.	968	Normal	0.00
944	ECI Head Quarter	ECI Head Quarter P.o.s.	944	Normal	0.00
991	ECI Head Quarter	ECI Head Quarter P.o.s.	991	Normal	0.00
939	ECI Head Quarter	ECI Head Quarter P.o.s.	939	Normal	0.00
943	ECI Head Quarter	ECI Head Quarter P.o.s.	943	Normal	0.00
929	ECI Head Quarter	ECI Head Quarter P.o.s.	929	Normal	0.00
932	ECI Head Quarter	ECI Head Quarter P.o.s.	932	Normal	0.00
954	ECI Head Quarter	ECI Head Quarter P.o.s.	954	Normal	0.00
Total VM				Normal	0.00

Cash Track

Display up-to-date cash status (coins and banknotes) within each machine, as well as manage the cash withdrawals activities made by staff

MONEYTOR
WWW.MONEYTOR.EU

by
BITX
m2m data eXchange

Moneytor and Bitx are registered trademarks of Your Voice SpA, Milan, Italy