

# JANUS REMOTE COMMUNICATIONS

## PRODUCT BRIEF

### Terminus Plug-In Series GSM865CF Terminal Module

#### Description

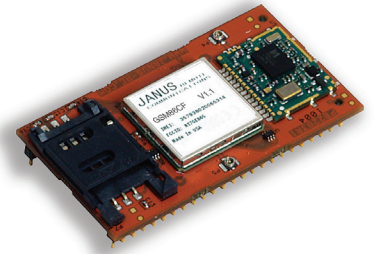
The Terminus Plug-In series of products are plug-in communication modules specifically designed for wireless M2M applications. Their multi-band design enables worldwide development of applications.

The Plug-In Terminus products allow users the option to change network and user configurability as technology and communication needs change. Three communication options, GSM, CDMA and UMTS are available within one common board layout. Each unit will be a certified end product with a power supply and 5.0V operation. The GSM and UMTS modules will also include a SIM Card socket. To allow for easy integration, this terminal is available in an open frame option only.

The Terminus GSM865CF is the GSM communication module of the Plug-In series. This 2.5G module provides M2M communication over GSM networks.

#### GSM865CF Features

- Quad-band EGSM 850 / 900 / 1800 / 1900 MHz
- GSM/GPRS protocol stack 3GPP Release 4 compliant
- Control via AT commands according to 3GPP 27.005, 27.007 and Telit custom
- Control via remote AT commands
- Serial port multiplexer 3GPP 27.010
- SIM application toolkit 3GPP TS 51.014
- SIM access profile
- TCP/IP stack access via AT commands
- Over-the-Air firmware management
- Voice and SMS (MO / MT)
- Output power
  - Class 4 (2W) @ 850 / 900 MHz
  - Class 1 (1W) @ 1800 / 1900 MHz
- Sensitivity:
  - $\leq -107$  dBm @ 850 / 900 MHz
  - $\leq -106$  dBm @ 1800 / 1900 MHz
- DARP/SAIC support
- Dimensions: 2.5" x 1.4" x 0.365"
- Operational temperature range (without GPS): -40°C to 80°C
- Operational temperature range (GPS configured): -30°C to 65°C
- Internal LDO regulator
  - Input voltage range: 4.75 to 5.25Vdc (5.0Vdc Nominal)
  - Supply disable via terminal input pin
- SIM Card
  - Standard locking SIM card socket
  - Or, optional SIM on a chip
- GSM and GPS available via Murata GSC miniature RF connector
- GPS
  - Stand alone GPS available at terminal pin interface
  - Dedicated GPS antenna connection with active antenna support



#### Applications

##### Suitable for all M2M Applications

- Fleet Management
- Asset Tracking
- Security Systems
- Telemetry
- Telematics & Telecontrol
- Remote Monitoring Systems
- Remote Meter Reading
- Vending Machines

#### Terminus Models & Ordering

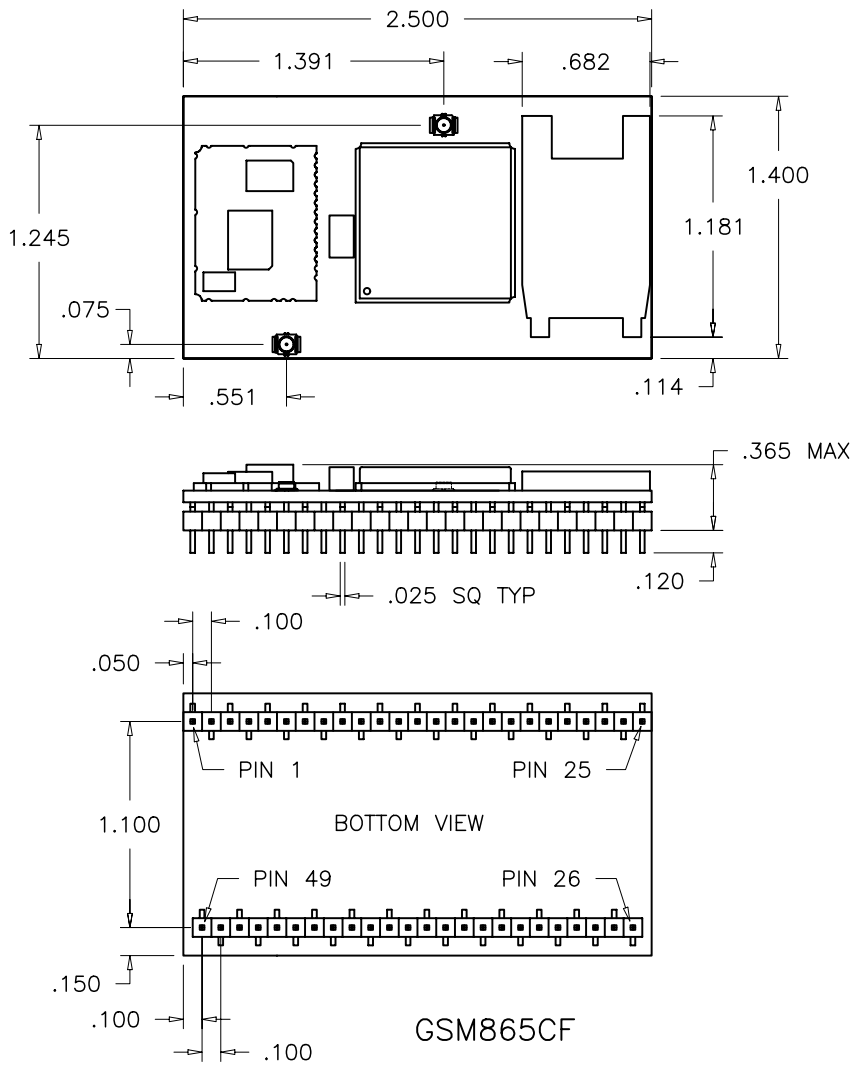
Ordering	Description
GSM865CF V1.1	Terminus GSM Plug-In Module - GPS enabled
GSM865CF V2.00	Terminus GSM Plug-In Module - without GPS
Additional Plug-In Products	
CDMA864CF V2.00	Terminus CDMA Plug-In Module - Sprint Certified
CDMA864CF V3.00	Terminus CDMA Plug-In Module - Verizon Pending
UMTS864CF V1.00	Terminus UMTS Plug-In Module

2111 Comprehensive Drive  
Aurora, Illinois 60505  
**630.499.2121**  
Fax: 630.851.5040  
www.janus-rc.com

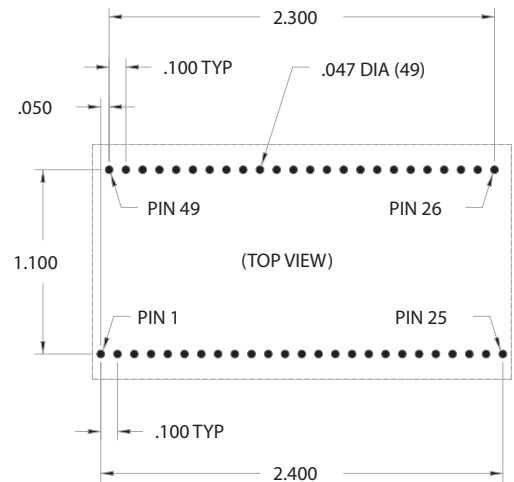
Bulletin **JA03-PB\_GSM**  
Revision **P03**  
Date **3 May 2011**



Making machines talk.



**GSM865CF Mechanical Drawing**



**Terminus Plug-In**

**JANUS** REMOTE  
C ● M M U N I C A T I O N S ●

Division of The Connor-Winfield Corporation  
2111 Comprehensive Drive • Aurora, Illinois 60505  
630.499.2121 • Fax: 630.851.5040

[www.janus-rc.com](http://www.janus-rc.com)



**Making machines talk.**

**Janus Remote Communications Europe**

Bay 143  
Shannon Industrial Estate  
Shannon, Co. Clare, Ireland  
Phone: +353 61 475 666