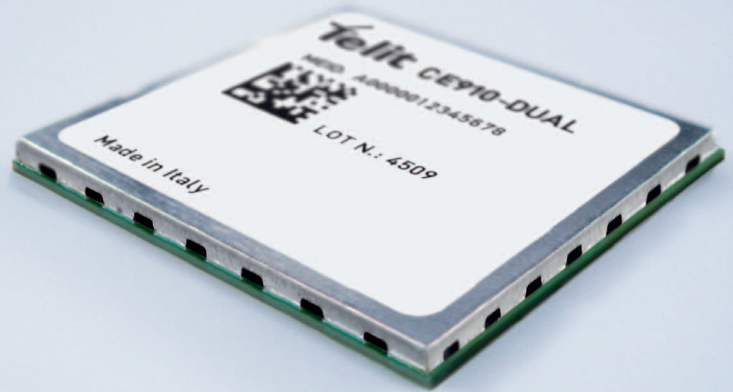


CDMA | 1xRTT

CE910-DUAL

Embedded



-  Ultra Compact
-  Telit Unified AT Command Set
-  LGA Package
-  Dual Band CDMA | 1xRTT
-  RoHS Compliant
-  Over The Air Reflash
-  OMA Device Management
-  Extended Temperature Range
-  Extended RF Sensitivity
-  USB 2.0 Full Speed Compatible
-  Embedded TCP/IP Stack

The CE910-DUAL is a dual band 1x RTT wireless module supporting up/down link data rates up to 153.6kbps. It is designed to have the same form factor of its GSM/UMTS/HSPA/EVDO counterparts of the xE910family: GE910, HE910 and DE910-DUAL.

The CE910-DUAL completes the Telit xE910 Family Form Factor offering, this enables integrators and developers to design their applications once and take advantage of the truly global coverage and service flexibility afforded by the combination of the most prevalent cellular technologies worldwide.

With its ultra-compact design and extended operating temperature range, the Telit CE910-DUAL is the perfect platform for low throughput wireless data applications on CDMA 1xRTT network, such as telemetry, telematics, smart metering, health care, tracking applications electronics and security. Additional features such as integrated TCP/IP UDP Stack provide extended functionality, adding value to the customer application without adding cost.

The extensive interface set, which includes user definable GPIO, provides ease of integration for peripherals and actuators.

Aiming to protect customers' investments in developing and deploying solutions based on Telit modules, the CE910-DUAL boasts a range of functions for over-the-air maintenance and management of software in the module.

As a part of Telit's corporate policy of environmental protection, all products comply to the RoHS (Restriction of Hazardous Substances) directive of the European Union (EU Directive 2002/95/EG).

Product features

- Dual-band CDMA 1x RTT 800 / 1900 MHz
- Backward compatible with IS-95 A/B
- Standard and Telit Unified AT command sets
- USB Interface with dual UARTs
- Built in UDP/TCP/IP stack
- Supply voltage range: 3.4 – 4.2 V DC
- Low power consumption

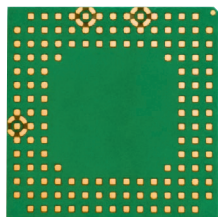
Approvals

- FCC and IC
- CCF57 Level 2
- CDMA Carrier Approvals
- RoHS



CE 910-DUAL

Embedded



actual size

Mechanical specifications

- Dimensions: 28.2 x 28.2 x 2.4 mm
- Weight: 4.7 grams

Interfaces

- USB 2.0 FS (12Mbps), slave only
- Full serial UART (UART 1)
- 2 wire UART (UART 2)
- I2C
- 1 channel analog audio
- PCM interface for digital audio
- Max 10 ports user definable GPIO
- 1-channel A/D

Environmental

- Extended temperature range:
-30°C to +85°C (operational)
-40°C to +85°C (storage temperature)

CDMA features

- Air interface IS-95A/B and CDMA 2000
- 1x RTT data up to 153.6 kbps
- Voice support
- 2-way SMS support

Performance

- Sensitivity:
1900 MHz: < -108 dBm
800 MHz: < -108 dBm
- Maximum RF output power:
24.5 dBm [typical]

Electrical

- Supply voltage:
Nominal: 3.8 VDC
Range: 3.4 ~ 4.2 VDC

Additional features

- Minimal power consumption
- Various status indications:
 - Unread short message
 - Low battery alert
 - In/Out range status
- Over-the-air provisioning and device management
- Over-the-air firmware update
- OMA-DM, OTASP, OTAPA (carrier dependant)
- Built in FTP client
- Built in SMTP (email) client
- Embedded TCP/IP stack with server and client functions
- Real Time Clock
- Alarm Management

Copyright © 2012, Telit
Subject to changes in technology, design and availability

Preliminary data only. Telit Wireless Solutions reserves the right to change product specifications without notice.

Distributed by:

Telit® wireless solutions

Telit Communications S.p.A.
Via Stazione di Prosecco, 5/B
I-34010 Sgonico (Trieste), Italy
Tel +39 040 4192 200
Fax +39 040 4192 289
E-Mail: EMEA@telit.com

Telit Wireless Solutions Inc.
3131 RDU Center Drive, Suite 135
Morrisville, NC 27560, USA
Tel +1 888 846 9773 or +1 919 439 7977
Fax +1 888 846 9774 or +1 919 840 0337
E-Mail: NORTHAMERICA@telit.com

Telit Wireless Solutions Inc.
Rua Cunha Gago, 700 - cj 81, Pinheiros
São Paulo - SP, 05421001, Brazil
Tel +55 11 2679 4654
Fax +55 11 3031 5051
E-Mail: LATINAMERICA@telit.com

Telit Wireless Solutions Co., Ltd.
12th Fl., Shinyoung Securities Bld.
34-12, Yeouido-dong, Yeongdeungpo-gu
Seoul, 150-884, Korea
Tel. +82 2 368 4600
Fax +82 2 368 4606
E-Mail: APAC@telit.com

www.telit.com

www.telit.com/ebook

www.telit.com/techforum

www.telit.com/facebook

www.telit.com/twitter

