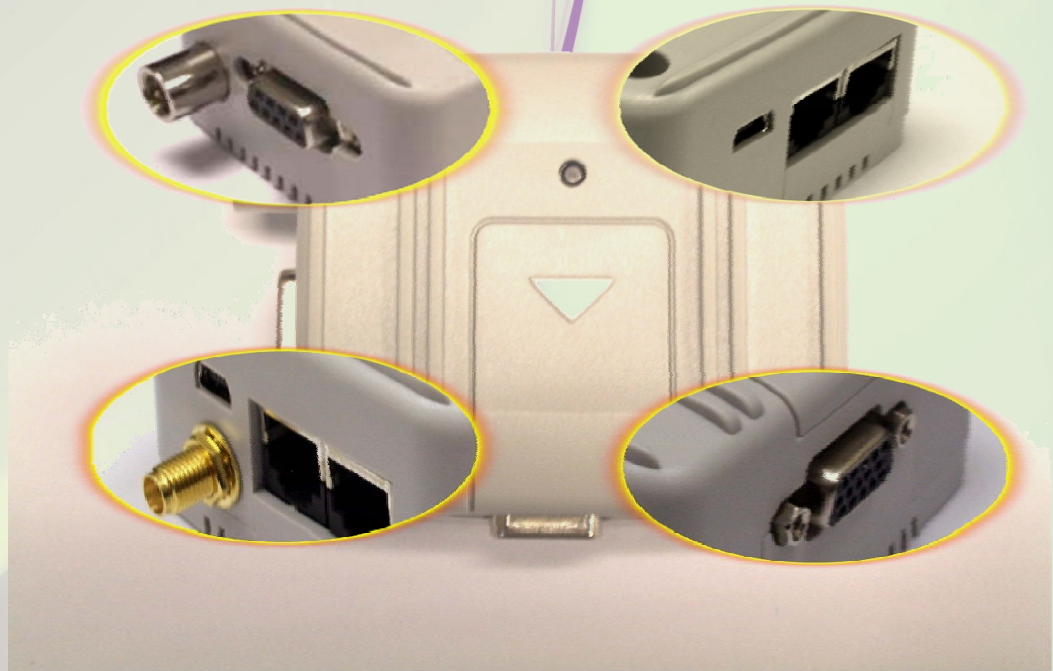




MTX TERMINALS



Communications

Voice
SMS
FAX
CSD
GPRS
UMTS-3G

Applications

Telemetry
Remote Control
Security, Alarms
Location
Fleet management
Data backup
Video & data
Internet Access



Sectors,

Vending
Security,
Home
Automotive
Transport
Logistic
Bank
Energy
Telecom

Benefits

Big chances of connectivity interfaces
Minimum external components
Fast time to market
Easy integration at low cost

Wireless Terminal Modems

MTX-TERMINALS CONSISTS IN A CONCENTRATED SPECIFIC EQUIPMENTS IN GSM-GPRS -UMTS-HDSPA M2M APPLICATION FIELD, WE SPECIALIZES IN SYSTEMS FOR WIRELESS DATA TRANSFERS BASED OF MANY YEARS OF EXPERIENCE IN HARDWARE, SOFTWARE AND DESIGNING. AN EXPERT FIELD APPLICATIONS ENGINEER TEAM ARE AVAILABLE TO HELP IN DEVELOPMENT AND DESIGN INTEGRATION.

MTX-TERMINALS IS A NEW GSM/GPRS - UMTS/HSDA MODEM TERMINALS FAMILY BASED PRIMARILY IN CINTERION WM MODULES, DESIGNED AND MANUFACTURED BY MATRIX ELECTRONICA ORIENTED TO MACHINE TO MACHINE MARKET



JAVA

MTX-65i

Quadband Modem GSM/GPRS class 12.
2 serial RS232, USB, SPI/I2C ports
Input/Outputs
Stack TCP, UDP, HTTP, FTP, SMTP, POP3.
Watchdog.

ULP Version

(Ultra Low Power for Telemetry applications)
2.5uA ULP mode



MTX-H25+PLUS

3G (UMTS)-HSDPA Terminal
3.6 Mbps DL - 384 Kbps UL.
EDGE, GSM/GPRS class 10.
Windows / Linux drivers
RS232 serial port and GPS .



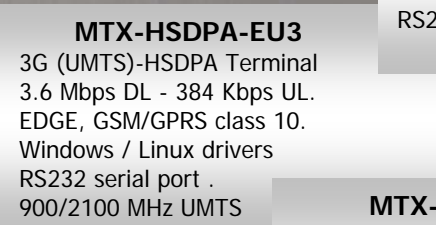
JAVA

MTX-65+G V3

ComboGPS 16 channels AGPS, DGPS
GSM/GPRS class 12 Quad band
1 RS232 port, I2C/SPI
Optoisolated Input/outputs
TCP-IP stack connectivity

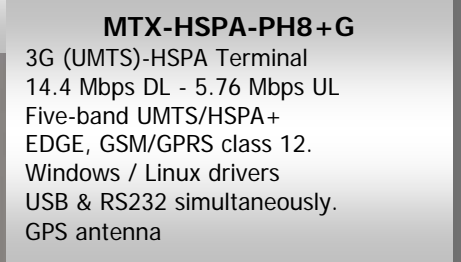
MTX-65+G V5 +B

Internal Li-Ion battery 1600mA/h
Accelerometer—1Mbit EEPROM
Hardware Watchdog



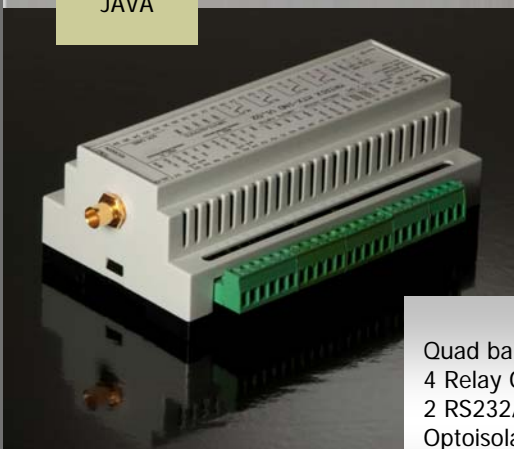
MTX-HSDPA-EU3

3G (UMTS)-HSDPA Terminal
3.6 Mbps DL - 384 Kbps UL.
EDGE, GSM/GPRS class 10.
Windows / Linux drivers
RS232 serial port .
900/2100 MHz UMTS



MTX-HSPA-PH8+G

3G (UMTS)-HSPA Terminal
14.4 Mbps DL - 5.76 Mbps UL
Five-band UMTS/HSPA+
EDGE, GSM/GPRS class 12.
Windows / Linux drivers
USB & RS232 simultaneously.
GPS antenna



JAVA

MTX-IND

Quad band GSM/GPRS class 12
4 Relay Outputs
2 RS232/ RS485/RS422 port, I2C/SPI, USB
Optoisolated input/outputs
Powerful TCP-IP stack
DIN Rail mounting



JAVA

MTX-IND- V2

IP65 Housing
Mains 220VAC powered
Relays 1P1C optional
RF Corionis Wavcard optional
Serial-ETH or WIFI optional
Internal or external antenna



CINTERION
a Gemalto company

EMBEDDED

A FULL RANGE OF ACCESSORIES ARE AVAILABLE

MTX-TERMINAL range of product covers all your machine needs to communicate, from simple applications using SMS, CSD up to GPRS connection with a powerful TCP-IP integrated, up to fast transmit/receive data using UMTS-HSPA network. The combination with GPS receiver gives the possibility to locate any mobile system. The JAVA enabled terminals allows save space, time and cost reduction embedding your application inside without any extra component

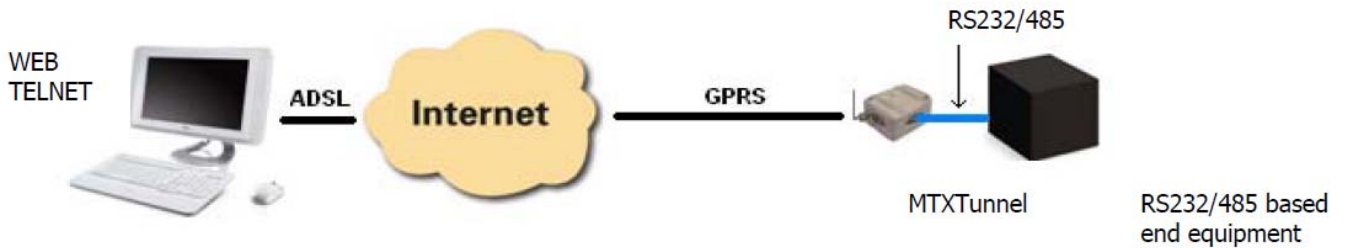
PRODUCT	MTX65 GSM/GPRS (Java)	MTX-HSDPA -EU3	MTX-HSPA -PH8	MTX-65+G Combi GPS + GSM/GPRS	MTX-IND INDUSTRIAL GSM MODEM
VERSION	3	1	1	3, 5	1
Frequency Range	Quad-Band GSM/GPRS	Dual/ Tri Band UMTS/HSDPA Quad Band GSM/GPRS/EDGE		Quad-Band GSM/GPRS	
JAVA	✓			✓	✓
GPS			✓	✓	
DATA Transmission					
HSDPA 3.6MBPS / 384 Kbps		✓			
HSPA 14.4Mbps/5,76 Mbps			✓		
EDGE		✓	✓	✓	
GPRS	Class 12	Class 10		Class 12	
CSD	✓	✓	✓	✓	✓
SMS	✓	✓	✓	✓	✓
TCP-IP Connectivity	✓	✓	✓	✓	✓
Interfaces					
Serial RS232	2	1	1	1	2 RS232/485/422
Input/Outputs	4	4		4+4 Optoisolated	5+2 Optoisolated 4 Relay Outputs
ADC-DAC	2 / 1	1/ -		2 / -	2 (4-20mA)/ 1
I2C/SPI Bus	✓			✓	✓
Special Features					
Over The Air Update	✓			✓	✓
SIM Access Profile	✓		✓	✓	✓
NDIS/RIL driver	- / ✓	✓ / -	✓	- / ✓	- / ✓
Automatic restart after shutdown	✓	✓	✓	✓	✓
Soft/Hardware Watchdog	✓ / X			✓ / ✓	✓ / X
Power Supply	6-32 VDC with ON/OFF interfaces				12-30 VAC/VDC
Common Features	Dimension without connectors: 78,1 x 66,8 x 37,2 mm except MTX-IND Temp Range: -30° +75° GSM Antenna connector: FME GPS Antenna connector: SMA Audio handset port USB 2.0 port SIM interface (3.3-1.8V)				

MTX-TUNNEL

MTX-TUNNEL is an application running into GSM-GPRS Terminal based on Cinterion TC65i designed for communication with remote devices, which have RS232/I2C-SPI ports.

It acts as a transparent RS232 port. You will see your remote devices as directly connected to the computer.

MTX-TUNNEL 5.1 has lot of extra features like WebServer, SMS telemetry, Telnet, etc... useful in all M2M scenarios



GPRS-SERIAL TUNNEL

TCP Client

TCP Server

UDP Client / Server

GPRS connection modes:

Permanent mode

Under request (SMS, lost call, selected phone numbers)

Change on an input digital level

An analog input is out of selected level window (MIN, MAX)

Serial data present on RS232/RS485 port

Scheduled date/hour timing

WebServer

Telnet

SMS Alarms and Output control

IPs dynamic resolution:

DynDNS

Private DNS

SMS

SSL Security

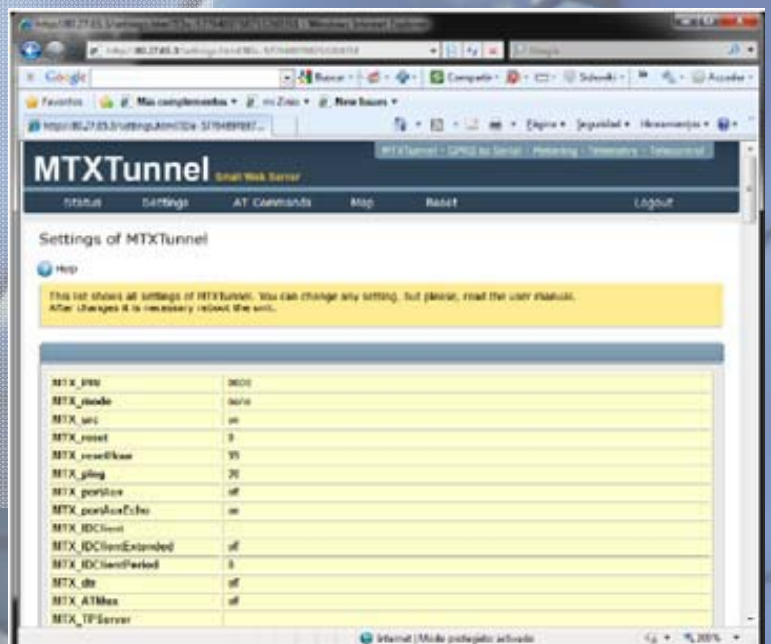
Firewall IP

User API

Telemetry (GPIOs and GPS)

GRPS-I2C/SPI tunnel

Serial RS232/485 – HTTP tunnel



Alejandro Sanchez 109
28019 Madrid-Spain
+34-915602737
<http://www.mtx-terminals.com>
email: gsm-support@matrix.es
<ftp://matrixelectronica.eu/MTX-Terminals>